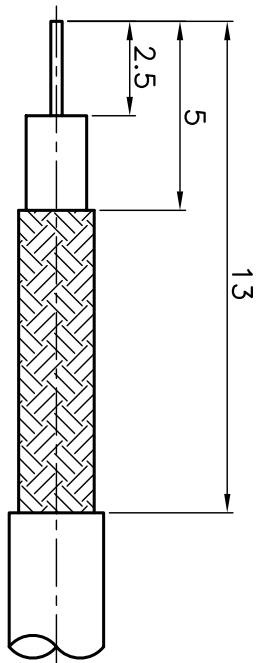
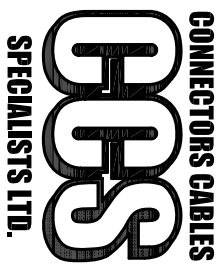
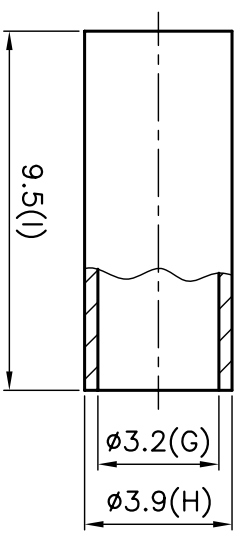
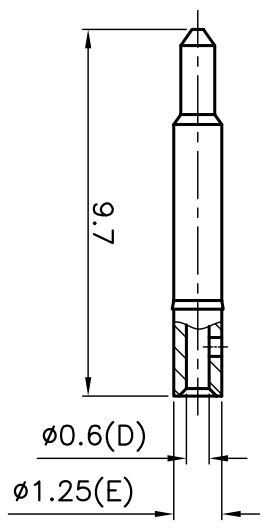
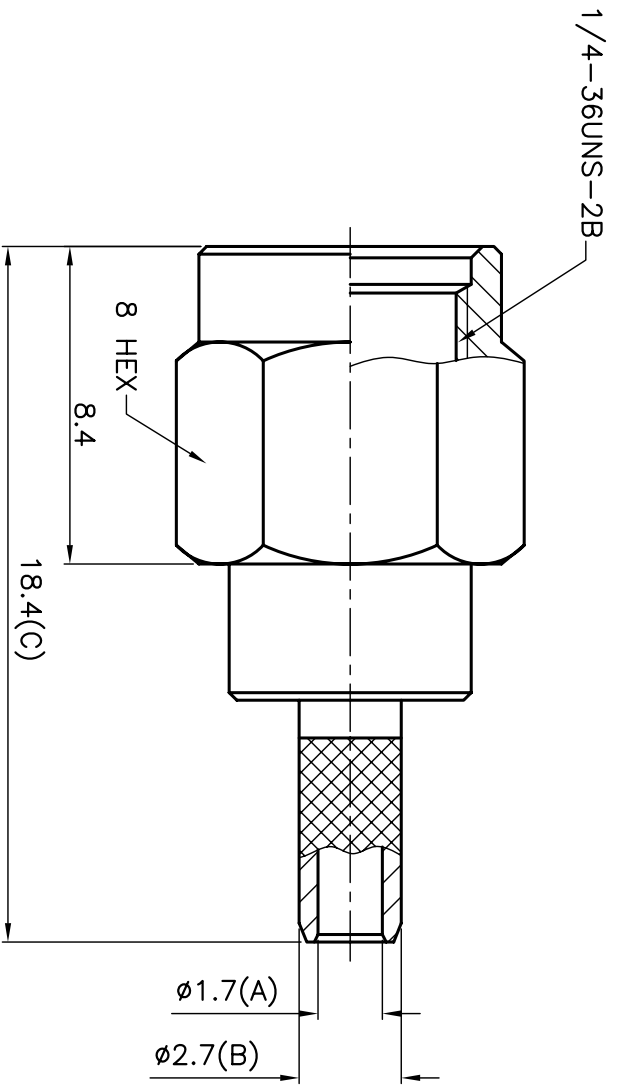


ISS	DESCRIPTION \ DATE

REVISIONS



RECOMMENDED
CABLE STRIPPING DIM'S



SMA MALE CRIMP

FOR RG174 AND RG316 COAXIAL CABLE

PART NO: SMAPCR316

DRAWING NO:

ISO 9001 certificate

APRD:	UNLESS OTHERWISE SPECIFIED TOLERANCES 0.5-6 = ±0.2 >6-30 = ±0.4 >30-120 = ±0.6 >120-315 = ±1.1 >315-1000 = ±1.6 ANGLES = ±5°	FERRULE	BRASS	GOLD	KA/2005/10527 \ KA/2005/30993
CHKD:		CONTACT PIN	BRASS	GOLD	KA/2005/10527 \ KA/2005/30993
DR:		BODY	BRASS	GOLD	KA/2005/10527 \ KA/2005/30993
DATE: 08/28/06"		INSULATOR	TEFLON	WHITE	KA/2005/50918
SHEET: .		RING	STAINLESS	NICKEL	KA/2005/10524 \ KA/2005/60362
SCALE: 5/1		GASKET	S.L.RUBBER	RED	KA/2005/10529
		SHELL	BRASS	GOLD	KA/2005/10527 \ KA/2005/30993
		DESCRIPTION	MATERIAL	FINISH	SGS REPORT NO

RoHS COMPLIANT